

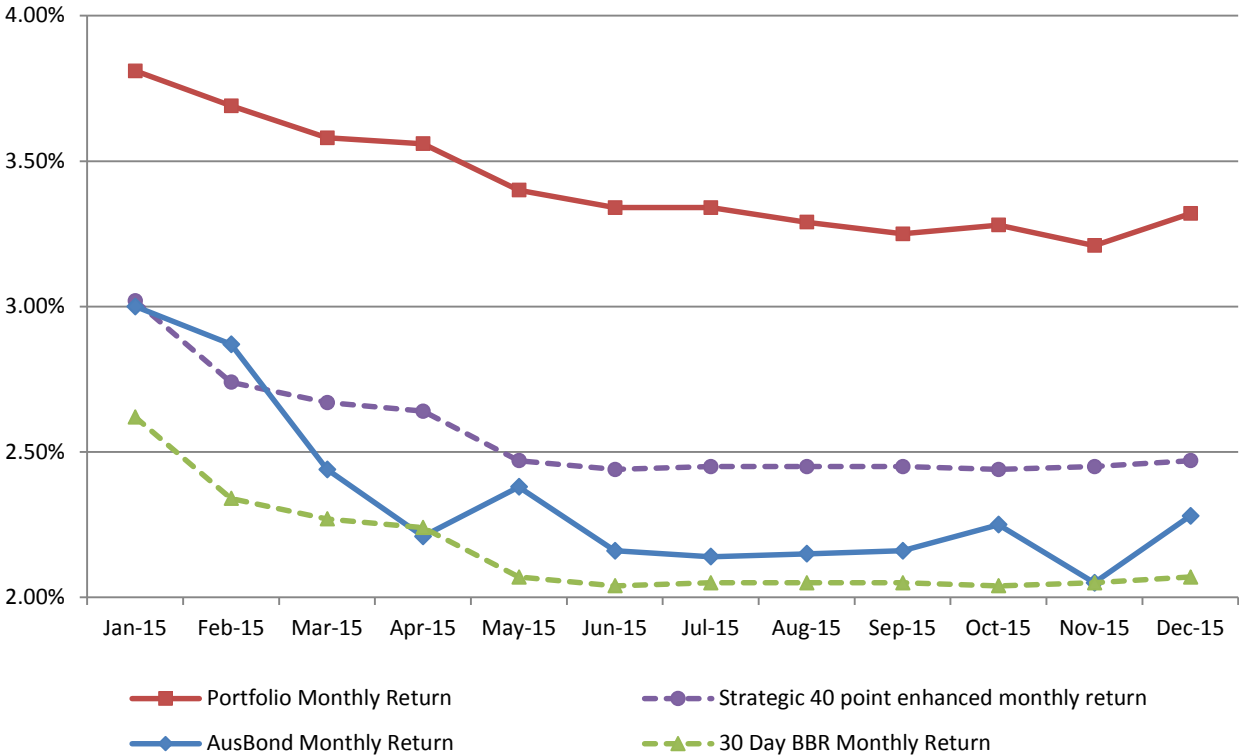
**ATTACHMENT B**

**INVESTMENT PERFORMANCE  
AS AT 31 DECEMBER 2015**



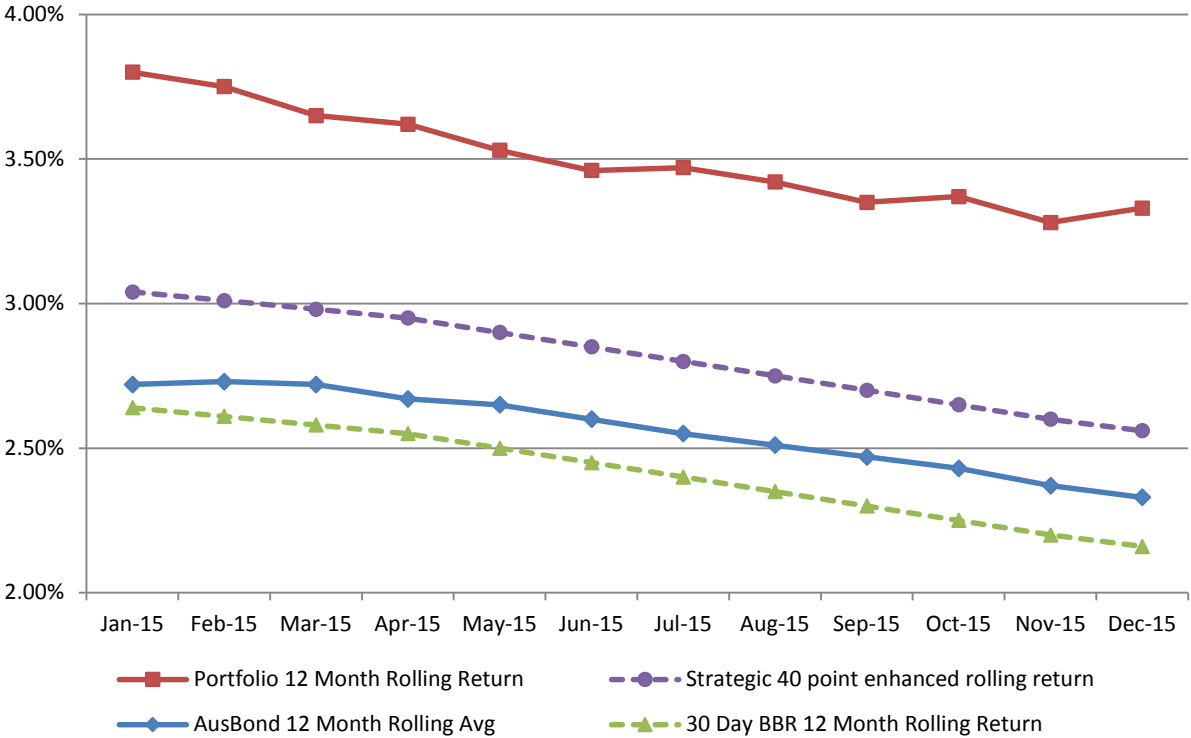
## Monthly Results

Actual Portfolio vs Strategic Enhanced Benchmark vs AusBond Benchmark vs 30 Day BBR Benchmark  
December 2015



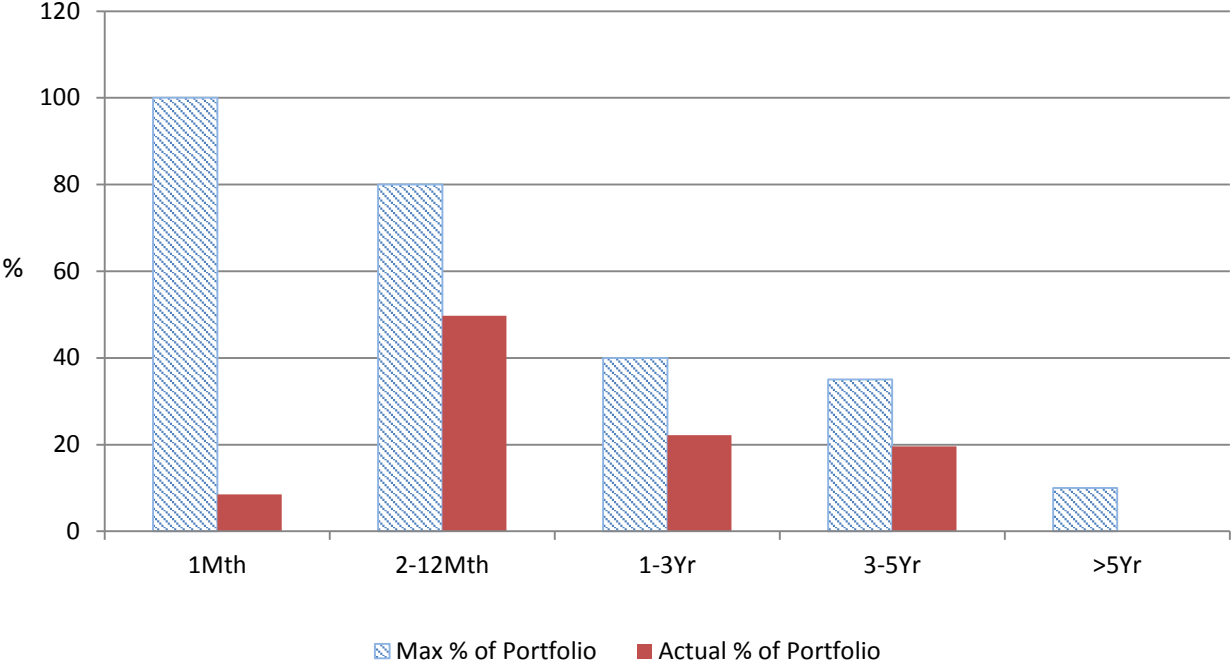
## 12 Month Rolling Averages

Actual Portfolio vs Strategic Enhanced Benchmark vs AusBond Benchmark vs 30 Day BBR Benchmark  
December 2015

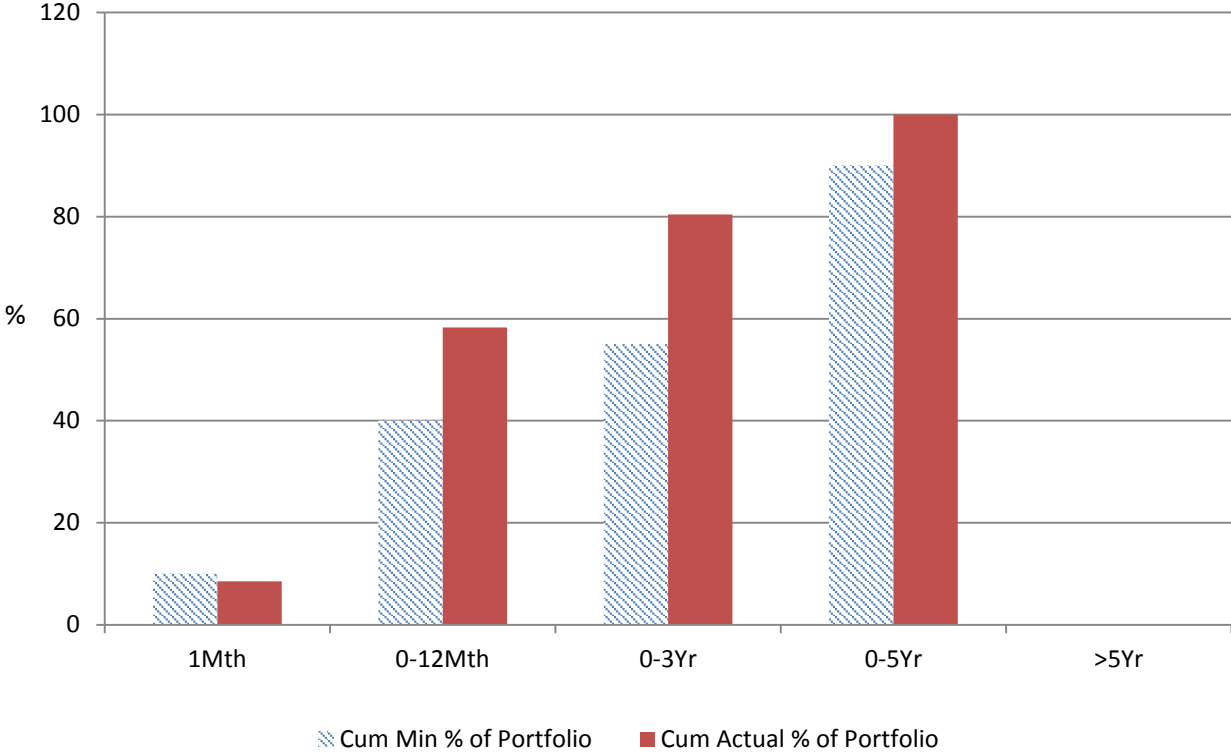


# ATTACHMENT B

### % Liquidity - Maximum Allowances



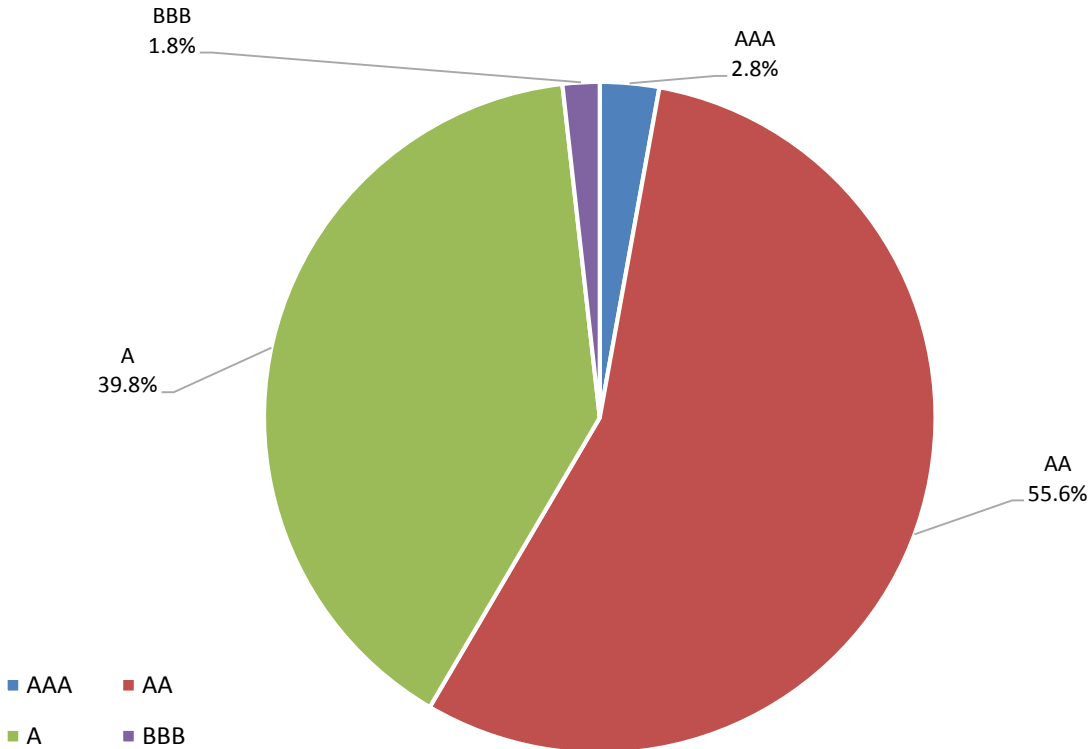
### % Liquidity - Minimum Allocations



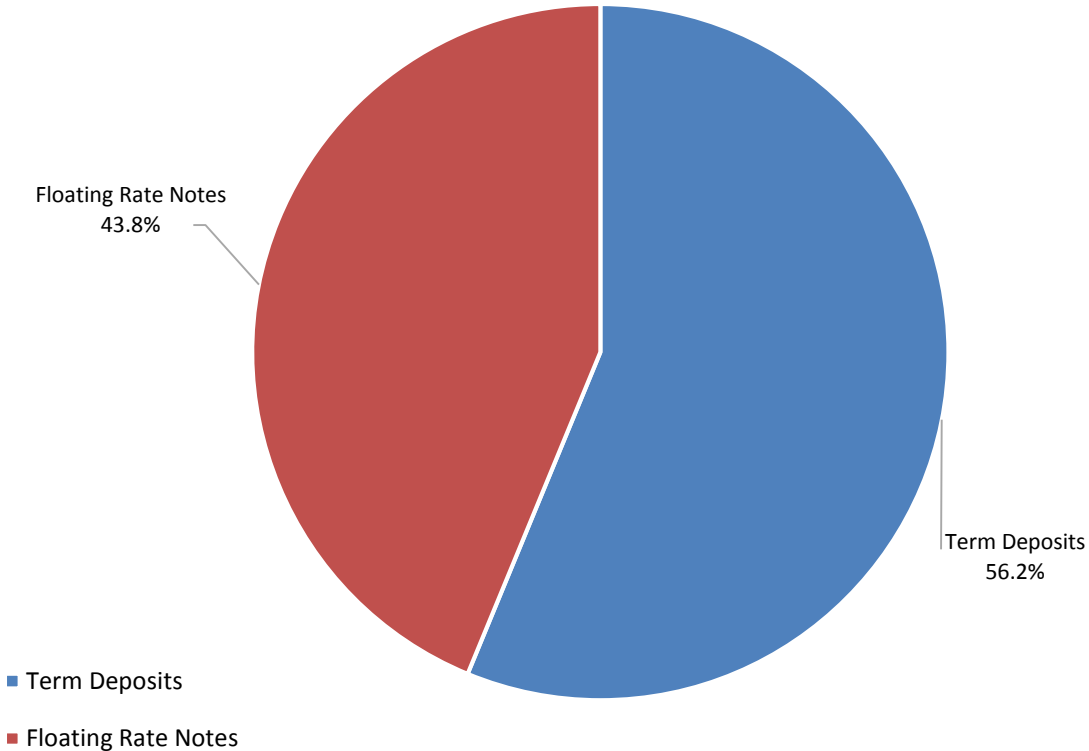
The '1Mth' balance amounts to \$48M is less than the 10% threshold but still exceeds the alternative \$40M threshold as per Council's Cash and Investment Policy. All liquidity thresholds are therefore compliant.

# ATTACHMENT B

### Risk Profile at 31 December 2015



### Investment Product Profile at 31 December 2015



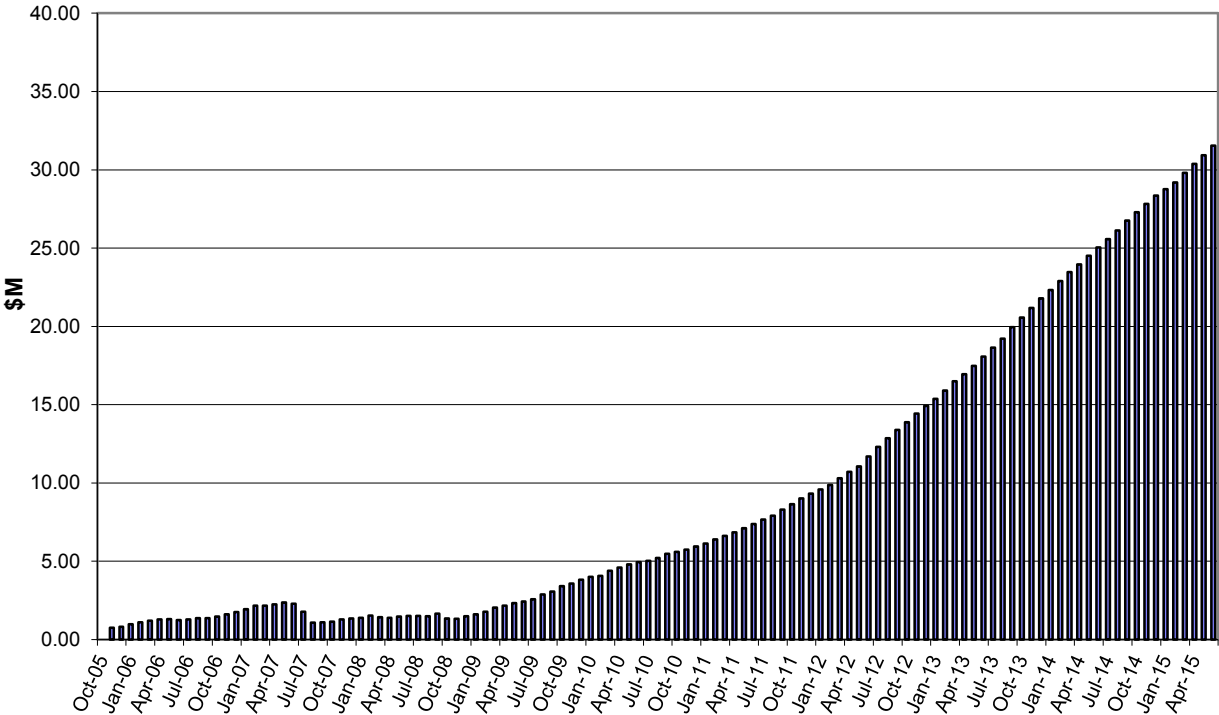
# ATTACHMENT B

## INVESTMENT AND CASH DISTRIBUTION BY FINANCIAL INSTITUTION

AS AT 31 DECEMBER 2015

Institution Category	Financial Institution	Amount \$M	Financial Inst. %	Institution Cat. %
Australian Big 4 Bank (and related institutions)	ANZ Bank	41.3	7.3	
	Commonwealth Bank-related:	149.0	26.3	
	<i>Bankwest</i>	35.0	6.2	
	<i>Commonwealth Bank</i>	114.0	20.1	
	National Australia Bank	64.0	11.3	
	Westpac Banking Corporation-related:	65.3	11.5	
	<i>St George Bank</i>	0.0	0.0	
	<i>Westpac Banking Corporation</i>	65.3	11.5	
<b>Big 4 Total</b>		<b>319.6</b>		<b>56.3</b>
Other Australian ADIs and Australian subsidiaries of foreign institutions	AMP Bank Ltd	14.0	2.5	
	Bendigo and Adelaide Bank	36.0	6.3	
	Bank Of Queensland	48.0	8.5	
	Members Equity Bank	12.0	2.1	
	IMB	7.0	1.2	
	Heritage Bank	4.0	0.7	
	Newcastle Permanent Building Society	22.5	4.0	
	CUA Limited	25.0	4.5	
	ING Bank	5.0	0.9	
	Greater Building Society	5.0	0.9	
	Bank of Communication	5.0	0.9	
	Rabobank	5.0	0.9	
	Suncorp Bank	45.0	7.9	
	Bank of China-Sydney Branch	5.0	0.9	
Royal Bank of Canada - Sydney	9.5	1.7		
<b>Other ADI Total</b>		<b>248.0</b>		<b>43.7</b>
<b>Grand Total</b>		<b>567.6</b>	<b>100.0</b>	<b>100.0</b>

## Cumulative Outperformance over AusBond Benchmark - 2005-2015



## Cumulative Outperformance over 30 Day BBR Benchmark - 2005-2015

